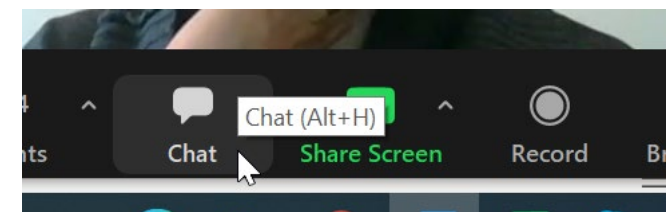
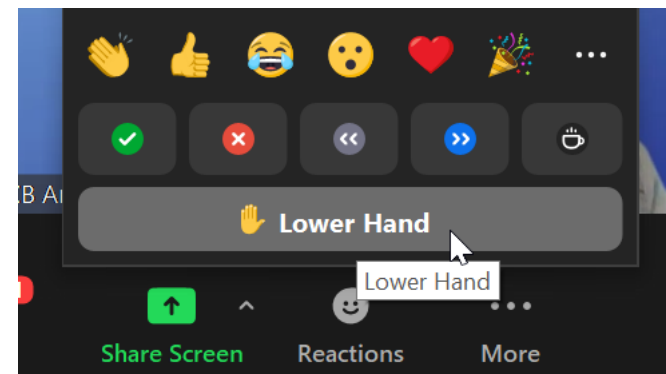
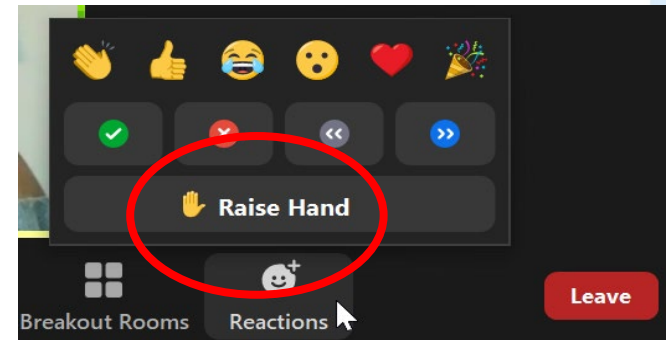
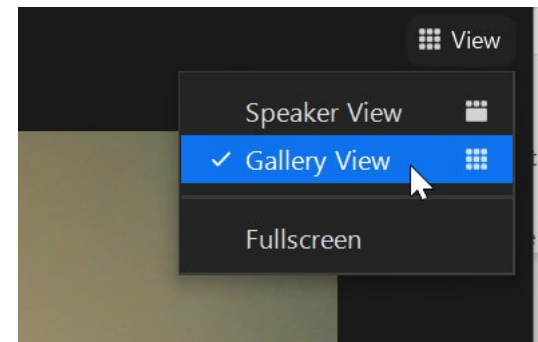


Annual Event and European Cooperation Day 2021

Bridging the borders and funding periods
- results and glimpses towards the future
- 23.9.2021

Technicalities in Zoom

- Keep your camera open
- Mute your microphone if not speaking
- Raise you hand if you have comments, questions etc.
- If you prefer you can also ask your question via chat
- *Menti.com*
- Technical support
 - Merike Niitepõld +358 40 742 0302
 - Veli-Pekka Suuronen +358 40 5910 110



Aim of the Event

- Showcase the results from Central Baltic Programme 2014-2020
 - Water
 - Labour Market
 - Export
- Give glimpses about Central Baltic Programme 2021-2027

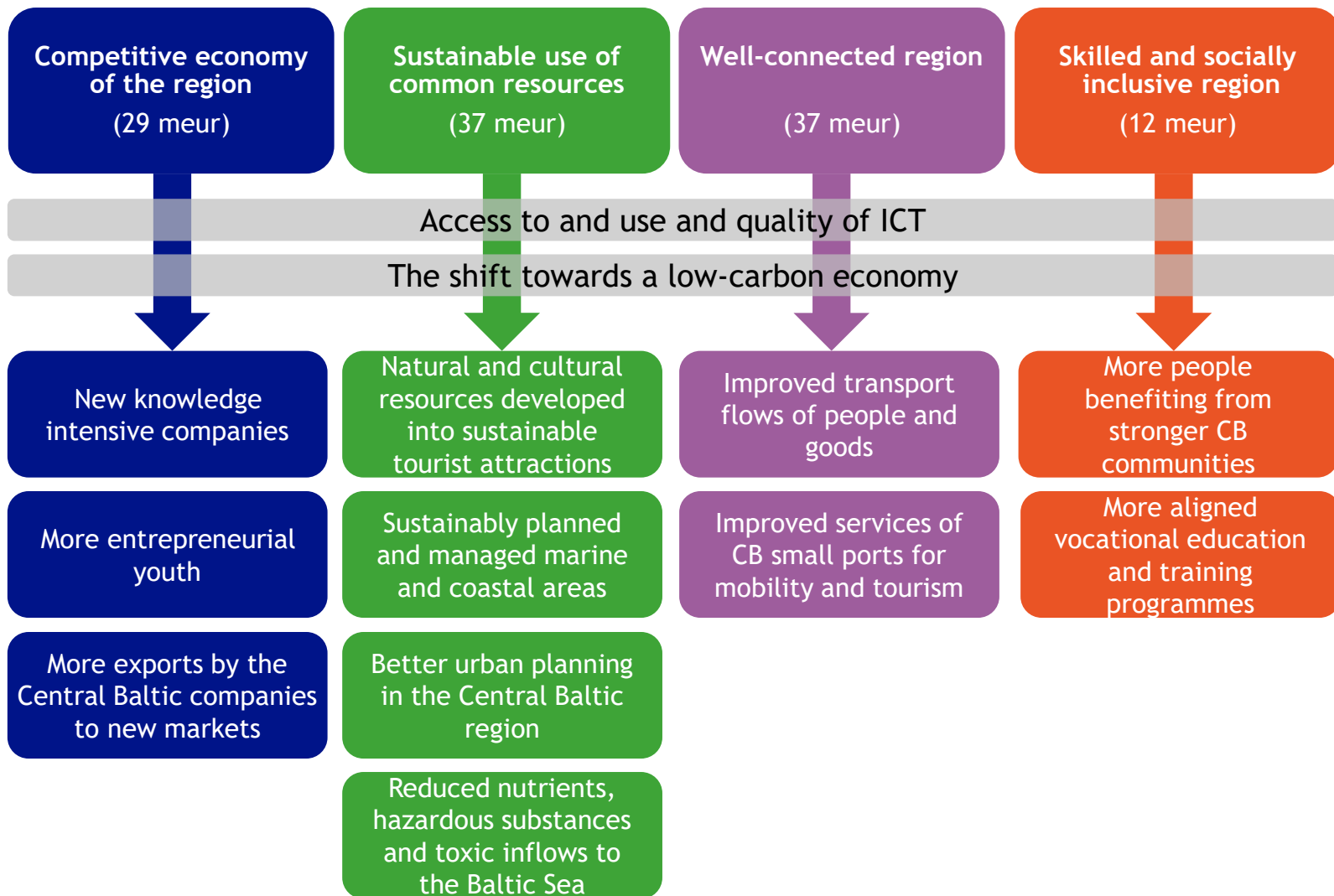
Agenda of the Event

- Plenary session about Programme 2014-2020 results on three different themes (11:00-12:00)
- *Break (12:00-12:30)*
- Parallel sessions (in breakout rooms) (12:30-14:30)
 - Water
 - Labour Market
 - Export
- *Break (14:30-14:40)*
- Plenary session (14:40-15:30)
 - Reports from parallel sessions
 - Central Baltic Programme 2021-2027

Water

Samu Numminen
Project Manager

23.9.2021



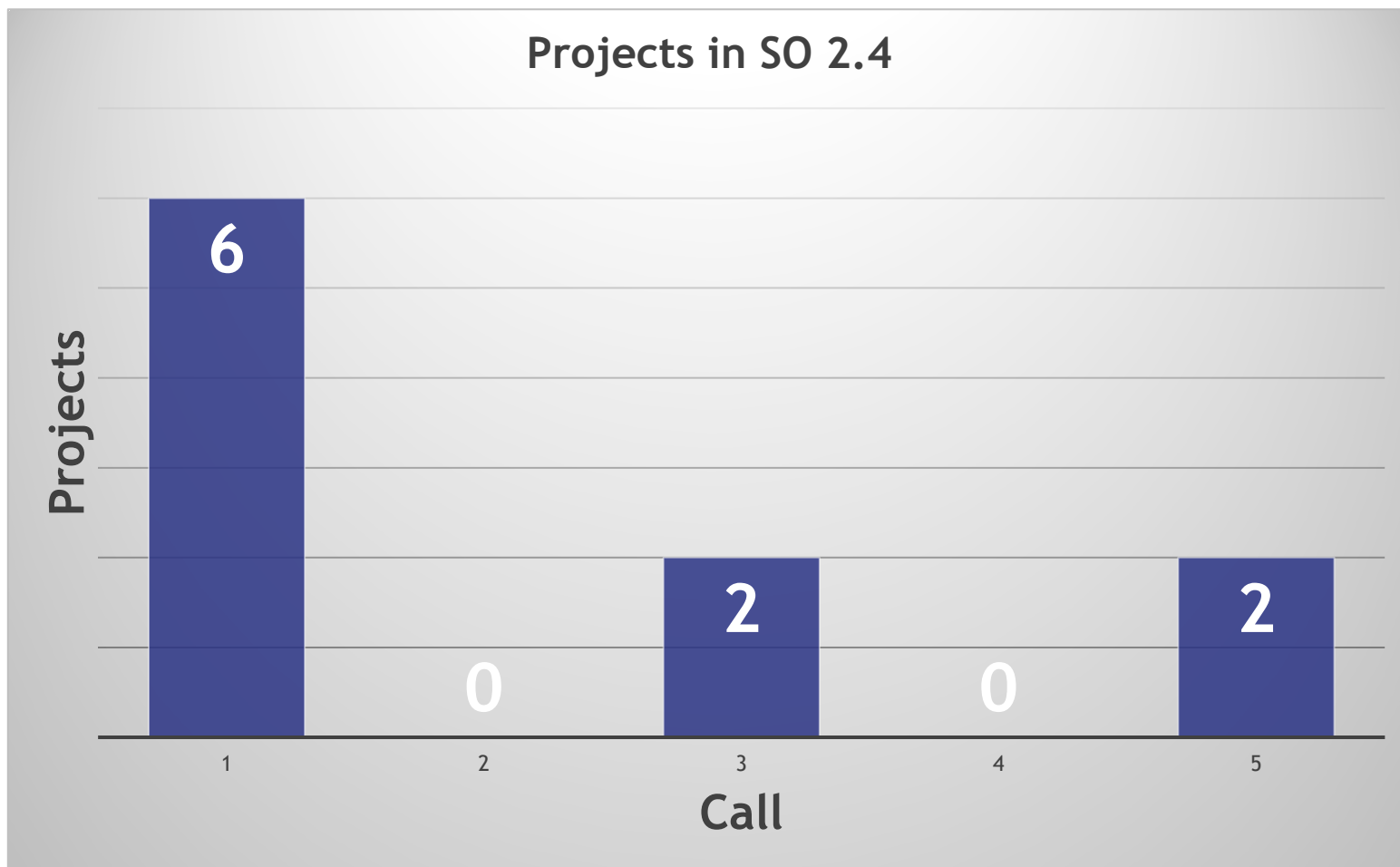
Reduced nutrient,
hazardous substance
and toxin inflows to
the Baltic Sea



Why support 'Water' projects?

- The Baltic Sea is joint in many ways
- Although some positive achievements have been made, it is not in a good enough condition
- The challenges cannot be solved by any one country alone
- CB input is also needed

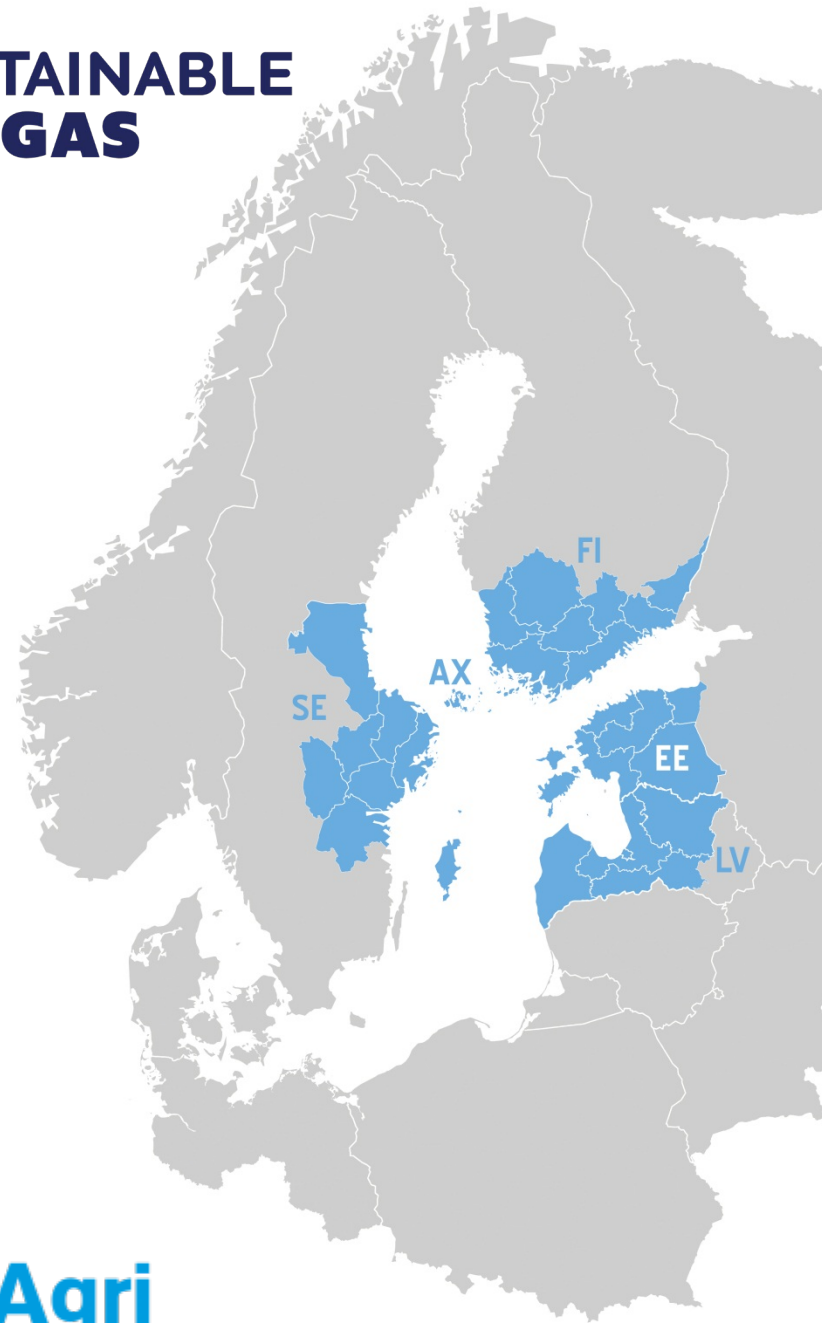
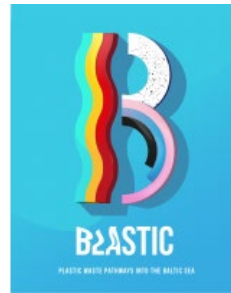
Overview of calls





REDUCING THE HARMFUL INFLOWS INTO
THE BALTIC SEA

SEABASED



Types of projects by focus

- Prevention of nutrient leakages
 - Especially agricultural sources
- Retention/removal of hazardous substances
- Seabased measures

- Contributions also from projects outside of the specific objective

Targets and achievements on programme level

- Result indicator: Amounts of nutrients, hazardous substances and toxins inflows into the Baltic Sea
- Target value: reduced quantities from 20 sources, based on achieved reductions
- Challenging to measure
- Even more challenging to consolidate

Targets and achievements on programme level

- Output indicator: Number of targeted sources of nutrients, hazardous substances and toxins
- Target value: reduced quantities from 20 sources
- Challenge of scale: what is a source?
- Target value was updated to 90 sources

Added value of cross-border cooperation

- ” joint efforts between partners to remove barriers and create a critical mass for inducing change”
- “project results were actively taken to use in the Baltic Sea region”
- “the project helped to strengthen the existing systems ensuring that project results have lasting effect beyond project duration”

Added value of cross-border cooperation

- “Several international organisations have shown interest in using the project methodological approach also in other parts of the world”
- “The cooperation enabled the collection of suitable management methods and technologies that are applicable across the BSR ”
- “several practical innovative actions were jointly developed and implemented to prevent nutrients and hazardous substances inflows”



Thank you!

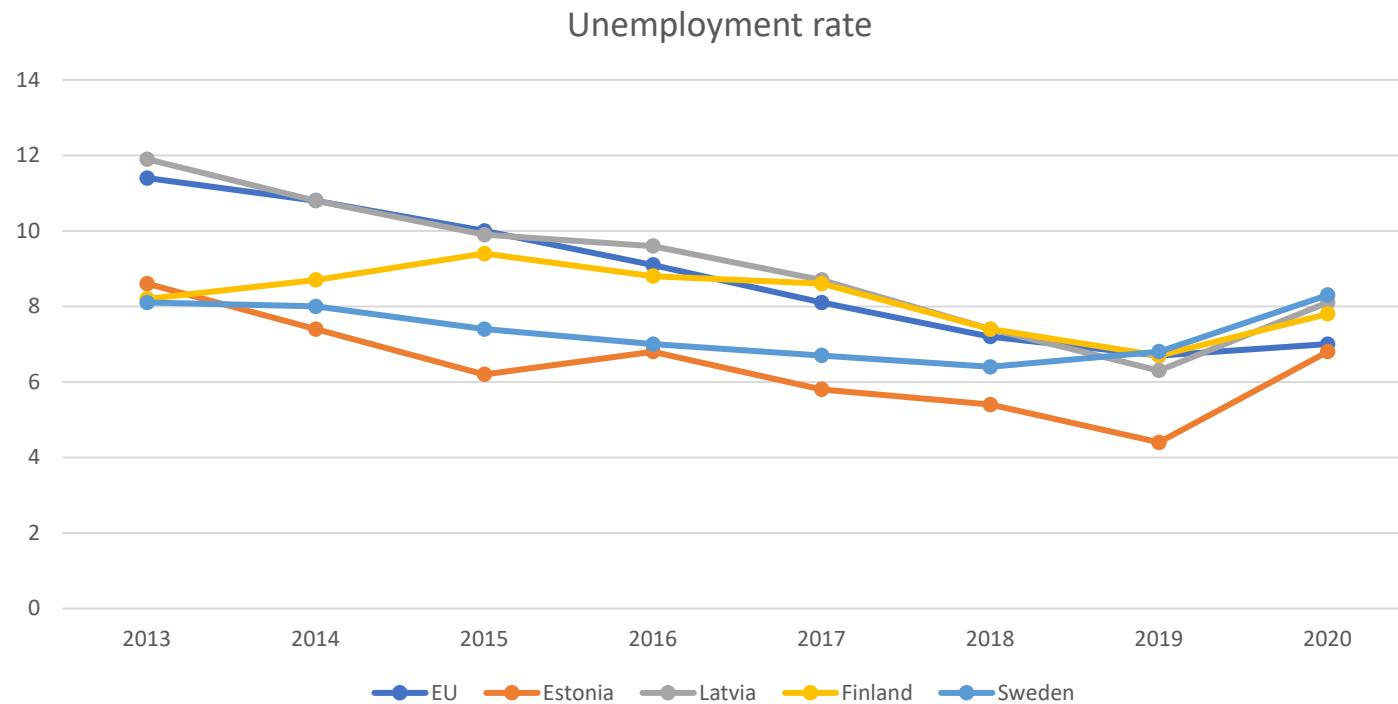
Labour market

Pille Laaksonen
Project Manager
23.09.2021

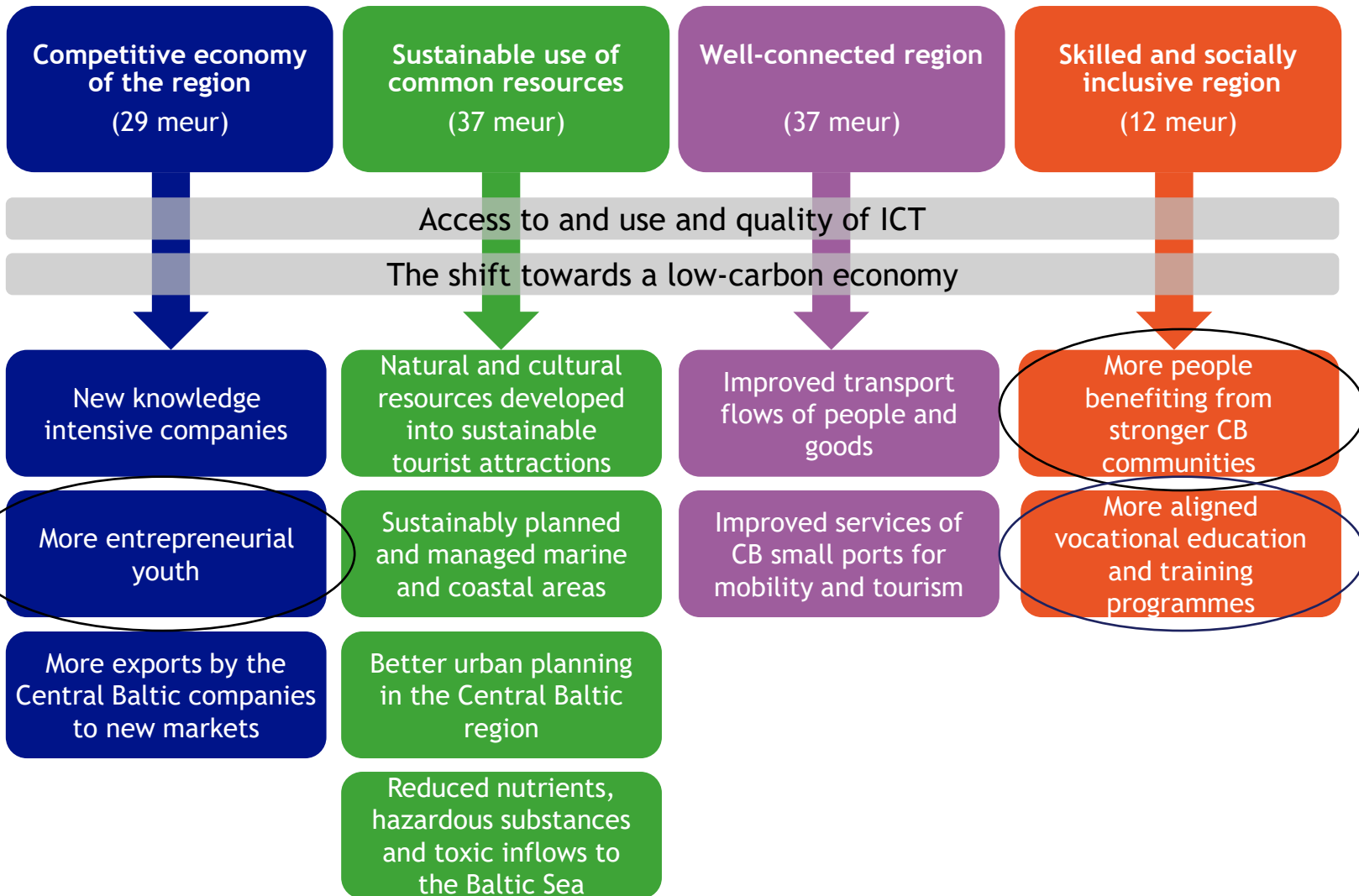
Labour market situation 2014-2020

- Employment rate grew 2014-2019 in all CB countries
- Covid-19 caused unemployment to increase
- Relatively high youth unemployment
- Persistent long-term unemployment
- Lower employment rate of women
- Global immigration crisis

Labour market situation 2014-2020



Source of data: Eurostat



More entrepreneurial youth

- Supporting young people to establish student companies and create international teams by:
 - training
 - mentoring
 - inspiration
 - encouragement
 - motivation

More entrepreneurial youth

- 8 projects supporting establishing of joint student companies
- Planned 2440 young persons to be involved in project activities
- By the end of 2020 already 1824 young persons have participated

More people benefiting from stronger CB communities

- Social inclusion challenges in communities addressed by the projects:
 - Unemployment and participation in labour market
 - Health and disability
 - Addictions
 - Inclusion of minorities and immigrants
- Small projects
- People to people approach
- Measures and activities designed for the target group

More people benefiting from stronger CB communities

- 12 projects out of 24 contributing to labour market integration of target communities
- Planned 2355 participants in labour market related projects (6277 in total)
- By the end of 2020 already 3181 persons participated (8977 in total)

More people benefiting from stronger CB communities

Communities improved:

- Youth
 - ✓ work experience
- Youth with mental health issues
 - ✓ social inclusion skills
 - ✓ individual plans, mentoring
 - ✓ awareness raising among employers

More people benefiting from stronger CB communities

Communities improved:

- Unemployed and long term unemployed
 - ✓ Counselling
 - ✓ Tailored training courses for people living in areas with very few jobs
 - ✓ Support finding alternative employment for performing artists
 - ✓ Work experience and trainings for long term unemployed

More people benefiting from stronger CB communities

- Communities improved:
- Immigrants and refugees
 - ✓ Language and cultural awareness trainings
 - ✓ Work related training
 - ✓ Mentoring
 - ✓ Networking
 - ✓ Work experience from voluntary work

More people benefiting from stronger CB communities

Communities improved:

- Women
 - ✓ Supporting entrepreneurship of young mothers belonging to ethnic minorities
 - ✓ Providing practical information for women looking for employment in other country

More aligned vocational education and training programmes

- 28 vocational or applied higher education programmes to be aligned
- By the end of 2020, 18 programmes aligned
- Programmes' subjects:
 - Nursing
 - Transport, logistics
 - IT
 - Tourism
 - Circular economy, green technologies
 - Etc.

Lessons learned

- Same target groups have somewhat different needs in different countries: methods and training programmes need to be adjusted
- Persons far from labour market need individual and tailored approach
- Projects working with social inclusion target groups and youth need face to face approach and had more difficulties during Covid-19 restrictions
- Well planned projects and strong partnership are essential for long-lasting results



Thank you!